

Datasheet

Kerio MailServer 6

IN THE OFFICE. AT HOME. ON THE ROAD.

Kerio MailServer is a messaging and collaboration suite to help organisations work smarter and not harder. Easy to administer, reliable and integrated with security, Kerio MailServer is a smart alternative to Microsoft Exchange.

OPTIMISING USER EFFICIENCY

Kerio MailServer helps increase productivity by offering features like Microsoft Exchange but without the high IT burden and administration cost.

Mobile email

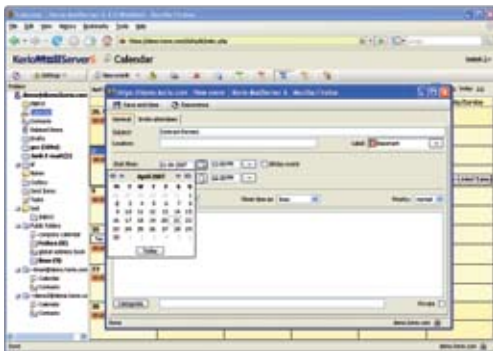
Kerio MailServer actively pushes email to the latest smartphones and synchronises contacts, calendars and tasks. Field workers can receive the latest email and meeting invitation and stay connected even on the go.

Users have the option to choose from Windows Mobile®, Treo Palm OS, BlackBerry, Apple iPhone, or Symbian using Mail for Exchange or DataViz's RoadSync client.

In event the phone is lost or stolen, Kerio Smart Wipe can delete all sensitive data on Windows Mobile® and Symbian devices.

Kerio WebMail

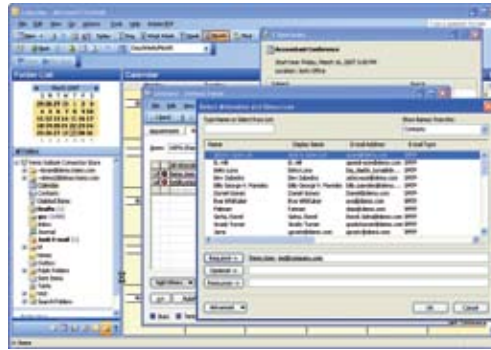
Available in 16 languages, Kerio WebMail is a full-featured email client that is comparable to desktop clients.



Users can send and receive messages, lookup contacts in multiple address books, schedule meetings, edit notes, share calendars and receive meeting notifications.

Windows savvy

Windows users have the option to use Microsoft Outlook, or Windows Mail and Calendar in Windows Vista.



Getting more out of Outlook, users not only centralise their data to be accessed from Kerio WebMail or a mobile device while out of the office, but also their custom mail filters and whitelist.

Mac friendly

Creating better collaboration between Mac and Windows users, Kerio MailServer provides extensive support for Microsoft Entourage, Apple Mail, Apple Address Book and Apple iCal.

Free to use the browser of choice, Mac users can get a full featured web mail experience with Safari or Firefox.



"Kerio MailServer stands out especially for its well-rounded feature set."



Winner for Best Messaging Solution LinuxWorld 2007



"...With its dedication to security, ease of administration, and flexibility, Kerio MailServer is simply spectacular right out of the box." Michael Genrich

Access desktop information from the web or wirelessly

	Email	Contacts	Calendars	Tasks	Notes	Shared/Public folders
Outlook	•	•	•	•	•	•
Entourage	•	•	•	–	–	•
Kerio WebMail	•	•	•	•	•	•
Smartphone	•	•	•	•	–	–

REDUCING THE BURDEN FOR ADMINISTRATORS

Ideal for organisations with little or no IT resources, Kerio MailServer simplifies setup and maintenance, to save time and lower administration costs.

Anti-spam protection

Kerio MailServer comes integrated with over 14 different anti-spam layers, providing the same level of protection as an appliance.

Accommodating the different needs of each organisation, Kerio Mailserver provides custom whitelists and blacklists. Utilising SpamAssassin's Bayes filter, endusers can use WebMail, Outlook, and IMAP clients to train the server and improve accuracy.

Anti-virus protection

For extra protection, Kerio MailServer offers protections with two anti-virus engines to keep data and assets safe and prevent business interruption caused by viruses.

Administrators have the option of using the preinstalled McAfee anti-virus or one of the built-in plugins for third party anti-virus for single or dual protection. Supported third party engines include: Alwil, Computer Associates, Sophos, Symantec and ClamAV.

Secure remote administration

Kerio's Administration Console, available for all three supported platforms, lets server administrators remotely control and monitor all aspects of Kerio MailServer.

Delegated access can be granted to allow domain administrators to manage user accounts, aliases, groups and passwords conveniently through a web interface.

Directory server options

Kerio MailServer can optionally authenticate users to Microsoft Active Directory, Apple Open Directory, Open LDAP, or to its internal database.

Server backup

Kerio MailServer helps protect important data with its built-in backup. All user data and server configurations are backed up for easy recovery to another server. Backups are automated and do not require the administrator to be present.

Archiving compliance

To assist with legal discovery and regulatory compliance, Kerio Mailserver optionally can archive all incoming and outgoing emails.

Virtual appliance

Kerio MailServer also provides a virtual appliance as an installation option. The virtual appliance is a pre-configured operating system using Fedora Core Linux to assure the most stable, secure and efficient operating environment for Kerio MailServer.

Pre-installed with Kerio MailServer, the virtual appliance offers faster deployments, faster server restoration, lower operational costs and the flexibility to easily upgrade hardware.

ABOUT KERIO

Innovating in Internet security and messaging since 1997, Kerio Technologies Inc. provides Internet messaging and firewall software solutions for small to medium sized businesses across the globe. Kerio's corporate headquarters are located in San Jose, California.

512 MB RAM

Windows 2000/XP/2003/Vista

Red Hat Linux

1 GHz

512 MB RAM

Red Hat Enterprise Linux

Fedora Core 4/5/6

SUSE Linux

1 GHz

512 MB RAM

SUSE Linux 10/10.1/10.2

Mac OS X

PowerPC G4 or G5

Intel Core

512 MB RAM

Mac OS X 10.3/10.4/10.5

Virtual Appliance

VMware Server

VMware Player

CLIENT REQUIREMENTS

Windows

Outlook 2000/XP/2003/2007

Windows Mail

Windows Calendar

Mac OS X

Entourage X/2004

Apple Mail

Apple iCal

Apple Address Book

Web browser

Internet Explorer 6/7

Firefox 2/3

Safari 2/3



Kerio Technologies Inc.

111 W. Saint John Street,

Suite 1100

San Jose, CA 95113

USA

Phone: +1 (408) 496-4500

www.kerio.com

Kerio Technologies UK Ltd.

Enterprise House, Vision Park

Histon

Cambridge, CB24 9ZR

United Kingdom

Phone: +44 1223 202 130

www.kerio.co.uk

Kerio Technologies s. r. o.

Anglické nabřeží 1/2434

301 49 Plzeň

Czech Republic

Phone: +420 377 338 901

www.kerio.cz

© 2007 Kerio Technologies Inc. All rights reserved.

Kerio and the Kerio logo are either registered trademarks or trademarks of Kerio Technologies Inc. in the United States and/or other countries. Mac and the Mac logo are trademarks of Apple Computer, Inc., registered in the U.S. and other countries. Microsoft, ActiveSync, Internet Explorer, Outlook, Entourage and Windows Mobile are either registered trademarks or trademarks of Microsoft Corporation in the United States and/or other countries. Other product and company names mentioned herein may be trademarks of their respective owners.



Connect. Communicate. Collaborate. Securely. | www.kerio.com